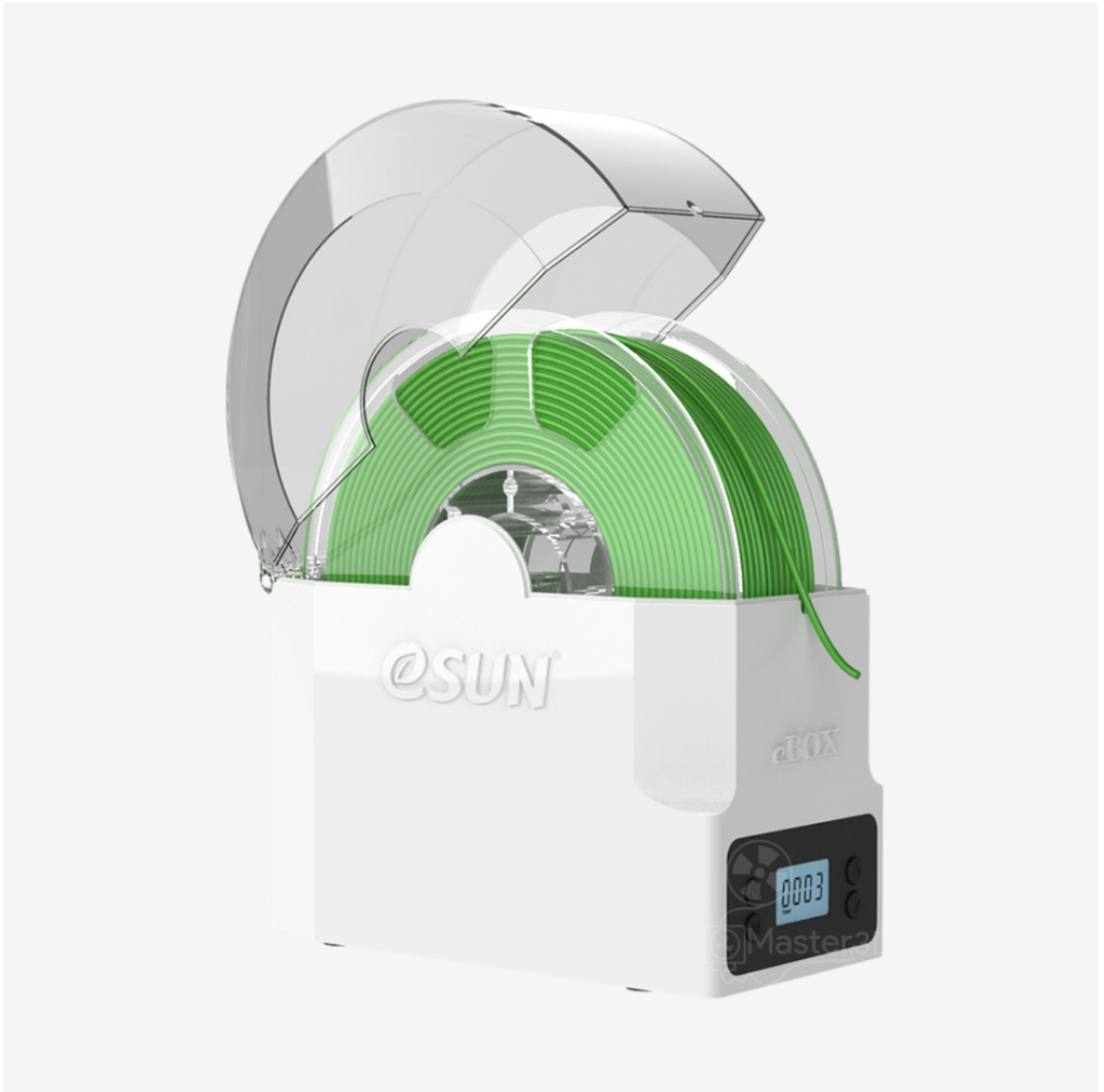


## eSUN eBOX Lite Filament Dryer

**LKR 21,591.60**



- Keeps filaments dry and ready, reducing print failures caused by moistureCompatible with most spool sizes and popular materials (PLA, ABS, PETG, TPU, Nylon)
- Transparent cover lets you monitor filament at a glance
- Energy-efficient and lightweight, perfect for everyday use

- Print directly from the dryer for continuous, moisture-free 3D printing

## **eSUN eBOX Lite Filament Dryer**

### **Keep Your Filaments Fresh and Ready**

Humidity is the hidden enemy of 3D printing—moisture-soaked filament can ruin prints, cause clogs, and waste time. The **eSUN eBOX Lite Filament Dryer** is a simple yet powerful solution that keeps your filament in optimal condition, ensuring smooth extrusion and consistent results. Designed for makers who want reliability without the frills, it's compact, efficient, and fits right into your workspace.

### **Practical Design Meets Everyday Use**

At *Master3D*, we know how frustrating failed prints can be. That's why this dryer was built with user-friendliness in mind. Just pop in your spool, set it up, and let the eBOX Lite quietly do its job. With its smart heating design and stable drying environment, it helps eliminate stringing, bubbles, and breakage—so you can focus on creating, not troubleshooting.

### **Key Features of the eSUN eBOX Lite Filament Dryer**

- Compatible with most common spool sizes
- Uniform heating for stable drying performance
- Transparent cover for easy filament monitoring
- Lightweight, compact build for small workspaces
- Energy-efficient operation for daily use

### **Why It's a Game Changer**

Think of this as a protective shield for your filament—like a pantry keeping your ingredients fresh until you need them. No more damp spools, no more guesswork. Whether you're running a quick prototype or a long production print, the eBOX Lite makes sure your filament feeds perfectly every time.

## FAQs

**1. Q. Can it dry all types of filament?**

A. Yes, the eSUN eBOX Lite Filament Dryer works with PLA, ABS, PETG, and other popular materials.

**2. Q. Does it come with adjustable temperature control?**

A. The Lite version is optimized for simple use, offering stable heating without complex adjustments.

**3. Q. Can I print directly from the eBOX Lite?**

A. Absolutely! You can feed filament directly from the dryer to your 3D printer for continuous, moisture-free printing.

Specification	Details
Product Name	eSUN eBOX Lite Filament Dryer
Compatible Filament Types	PLA, ABS, PETG, TPU, Nylon, and other common 3D printing materials
Supported Spool Size	Inner diameter $\geq$ 20mm, width $\leq$ 73mm, outer diameter $\leq$ 200mm
Operating Temperature	Stable heating (optimized for filament drying, non-adjustable control)
Input Voltage	100-240V AC, 50/60Hz
Power Consumption	~36W (energy-efficient operation)
Product Dimensions (L×W×H)	215 × 104 × 238 mm
Net Weight	750g
Material	Durable ABS with transparent cover
Additional Features	Print directly from box, transparent design for easy monitoring

**Disclaimer:** Dimensions and weight may vary slightly depending on measurement methods. Product images are for reference only and may differ from the actual item.